

# Circulation Research

JOURNAL OF THE AMERICAN HEART ASSOCIATION

American Heart  
Association®   
*Learn and Live*<sup>SM</sup>

## **Paracrine Mechanisms in Adult Stem Cell Signaling and Therapy**

Massimiliano Gnecci, Zhiping Zhang, Aiguo Ni and Victor J. Dzau

*Circ. Res.* 2008;103;1204-1219

DOI: 10.1161/CIRCRESAHA.108.176826

Circulation Research is published by the American Heart Association, 7272 Greenville Avenue, Dallas, TX 75214

Copyright © 2008 American Heart Association. All rights reserved. Print ISSN: 0009-7330. Online ISSN: 1524-4571

The online version of this article, along with updated information and services, is located on the World Wide Web at:

<http://circres.ahajournals.org/cgi/content/full/103/11/1204>

Subscriptions: Information about subscribing to Circulation Research is online at  
<http://circres.ahajournals.org/subscriptions/>

Permissions: Permissions & Rights Desk, Lippincott Williams & Wilkins, a division of Wolters Kluwer Health, 351 West Camden Street, Baltimore, MD 21202-2436. Phone: 410-528-4050. Fax: 410-528-8550. E-mail:  
[journalpermissions@lww.com](mailto:journalpermissions@lww.com)

Reprints: Information about reprints can be found online at  
<http://www.lww.com/reprints>

This Review is part of a thematic series on **Cellular Therapy**, which includes the following articles:  
The Stem Cell Movement [2008;102:1155–1168]  
Aging and Disease as Modifiers of Efficacy of Cell Therapy [2008;102:1319–1330]  
Genetic Enhancement of Stem Cell Engraftment, Survival, and Efficacy [2008;102:1471–1482]  
Cardiogenic Differentiation and Transdifferentiation of Progenitor Cells [2008;103:1058–1071]

## Paracrine Mechanisms in Adult Stem Cell Signaling and Therapy

Assessment and Optimization of Cell Engraftment after Transplantation  
Stem Cell Homing to Sites of Injury  
Regulatory Considerations in Cell Transplantation

*Eduardo Marbán, Editor*

## Paracrine Mechanisms in Adult Stem Cell Signaling and Therapy

Massimiliano Gnecci,\* Zhiping Zhang,\* Aiguo Ni, Victor J. Dzau

**Abstract**—Animal and preliminary human studies of adult cell therapy following acute myocardial infarction have shown an overall improvement of cardiac function. Myocardial and vascular regeneration have been initially proposed as mechanisms of stem cell action. However, in many cases, the frequency of stem cell engraftment and the number of newly generated cardiomyocytes and vascular cells, either by transdifferentiation or cell fusion, appear too low to explain the significant cardiac improvement described. Accordingly, we and others have advanced an alternative hypothesis: the transplanted stem cells release soluble factors that, acting in a paracrine fashion, contribute to cardiac repair and regeneration. Indeed, cytokines and growth factors can induce cytoprotection and neovascularization. It has also been postulated that paracrine factors may mediate endogenous regeneration via activation of resident cardiac stem cells. Furthermore, cardiac remodeling, contractility, and metabolism may also be influenced in a paracrine fashion. This article reviews the potential paracrine mechanisms involved in adult stem cell signaling and therapy. (*Circ Res.* 2008; 103:1204-1219.)

**Key Words:** adult stem cells ■ paracrine signaling ■ cytoprotection ■ neovascularization ■ regeneration

Despite major advances in our understanding, as well as treatment, of coronary artery disease, acute myocardial infarction (AMI) still represents a significant cause of mortality and morbidity worldwide. Indeed, following AMI, cardiomyocytes begin to die, and if blood supply is not quickly restored, all of the cardiac tissue served by the infarcted related artery undergoes necrosis or apoptosis, leading to chronic sequelae of ischemic cardiomyopathy and congestive heart failure. The endogenous regenerative capacity of the heart seems unable to replenish a significant loss of

tissue such as that after AMI.<sup>1,2</sup> However, the recent discovery of resident cardiac stem cells (CSCs),<sup>3</sup> together with the demonstration of bone marrow (BM)-derived stem cells able to home in the heart and transdifferentiate into cardiomyocytes,<sup>4,5</sup> has suggested the fascinating possibility that therapeutic myocardial regeneration might be achieved using adult stem cells (ASCs). Over the past several years, ASC therapy of the heart has generated significant interest in clinical and basic scientific communities. To date, the majority of animal and preliminary human studies of ASC therapy following

Original received April 2, 2008; revision received August 20, 2008; accepted September 15, 2008.

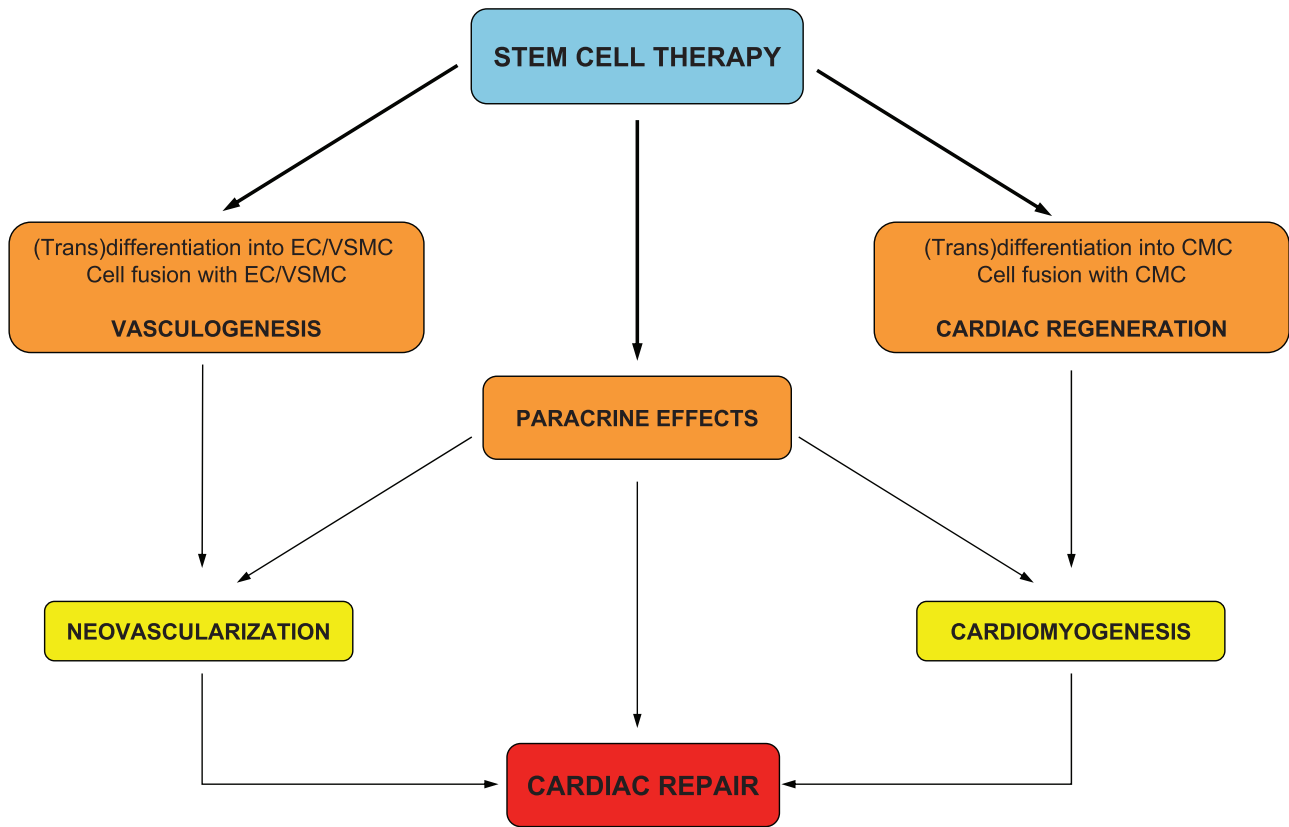
From the Mandel Center for Hypertension Research (M.G., Z.Z., A.N., V.J.D.); and Cardiovascular Division (Z.Z., A.N., V.J.D.), Department of Medicine, Duke University Medical Center, Durham, NC; Division of Cardiology (M.G.), Laboratory of Experimental Cardiology–Cell and Molecular Therapy, Fondazione IRCCS Policlinico San Matteo, Pavia, Italy; and Department of Heart, Blood and Lung (M.G.), University of Pavia, Italy.

\*Both authors contributed equally to this work.

Correspondence to Victor J. Dzau, MD, Davison Building 106, Duke University Medical Center, Durham, NC 27710. E-mail victor.dzau@duke.edu  
© 2008 American Heart Association, Inc.

*Circulation Research* is available at <http://circres.ahajournals.org>

DOI: 10.1161/CIRCRESAHA.108.176826



**Figure 1.** Proposed mechanisms of adult stem cell action in cardiac repair. Transdifferentiation and cell fusion of transplanted stem cells lead to cardiac regeneration and vasculogenesis. Paracrine effects can positively influence many processes, among them cardiomyogenesis and neovascularization (see the text for details). Cardiac regeneration, vasculogenesis, and paracrine effects lead to cardiac repair.

AMI have demonstrated an overall improvement of cardiac function. The cell types used have included BM-derived mononuclear cells (BM-MNCs), unfractionated BM cells (BMCs), hematopoietic stem cells (HSCs), endothelial progenitor cells (EPCs), mesenchymal stem cells (MSCs),<sup>6–9</sup> and CSCs.<sup>3,10–12</sup>

Among ASCs, CSCs seem to possess the properties required to achieve cardiac regeneration because they are autologous, can be expanded *ex vivo*, show proliferative restraint, and, most importantly, can differentiate into endothelial cells (ECs), vascular smooth muscle cells (VSMCs), and cardiomyocytes.<sup>13,14</sup> It has been shown that, when injected into infarcted murine hearts, CSCs regenerate cardiac tissue that appear to become functionally integrated with the surrounding native myocardium.<sup>3,11,12</sup> With regard to BM-derived stem cells, transdifferentiation into cardiomyocytes and into vascular lineage cells has been originally proposed as the principal mechanisms underlying their therapeutic action.<sup>15–17</sup> For example, Tomita et al showed that transplantation of MSCs pretreated with 5-azacytidine into cryoinjured rat hearts could home and differentiate into cardiac-like muscle cells and improve ventricular function.<sup>17</sup> Many other groups have confirmed that MSCs possess the ability to differentiate into cardiomyocytes.<sup>18</sup> Anversa and colleagues demonstrated that Lin<sup>−</sup>c-kit<sup>+</sup> (HSC-enriched) BM-derived cells injected directly into mouse hearts after AMI were able to engraft, transdifferentiate into cardiac cells, and regenerate

approximately 68% of the infarcted area with newly formed cardiomyocytes.<sup>16</sup>

More recently, other investigators have failed to detect permanent engraftment and transdifferentiation of transplanted BM-derived HSCs.<sup>19,20</sup> Furthermore, to date, it has not been possible to reproducibly induce a functional cardiac phenotype in BM-derived ASCs *in vitro* using physiological growth factors or nontoxic chemical compounds. These negative results have questioned the plasticity of both endogenous and transplanted BM-derived stem cells, and the scientific debate is still ongoing. Recently, cell fusion of BM-derived donor cells with recipient cardiomyocytes has been reported<sup>21–23</sup> and suggested to be a contributory mechanism. However, the frequency of cell fusion is also debated.<sup>24</sup>

Regardless of whether stem cells transdifferentiate via fusion-dependent or -independent mechanism, it has been shown that in some settings, the number of newly generated cardiomyocytes is too low to explain significant functional improvement. Therefore, we and others have proposed that the functional benefits observed after stem cell transfer in animal models of cardiac injury might be related to secretion of soluble factors that, acting in a paracrine fashion, protect the heart, attenuate pathological ventricular remodeling, induce neovascularization, and promote regeneration.<sup>25–27</sup> Accordingly, the 3 main established mechanisms of the action of ASC in heart repair are: cardiomyocyte regeneration, vasculogenesis, and paracrine actions (Figure 1). In this review, we

**Table 1. Putative Paracrine Factors Secreted by ASCs**

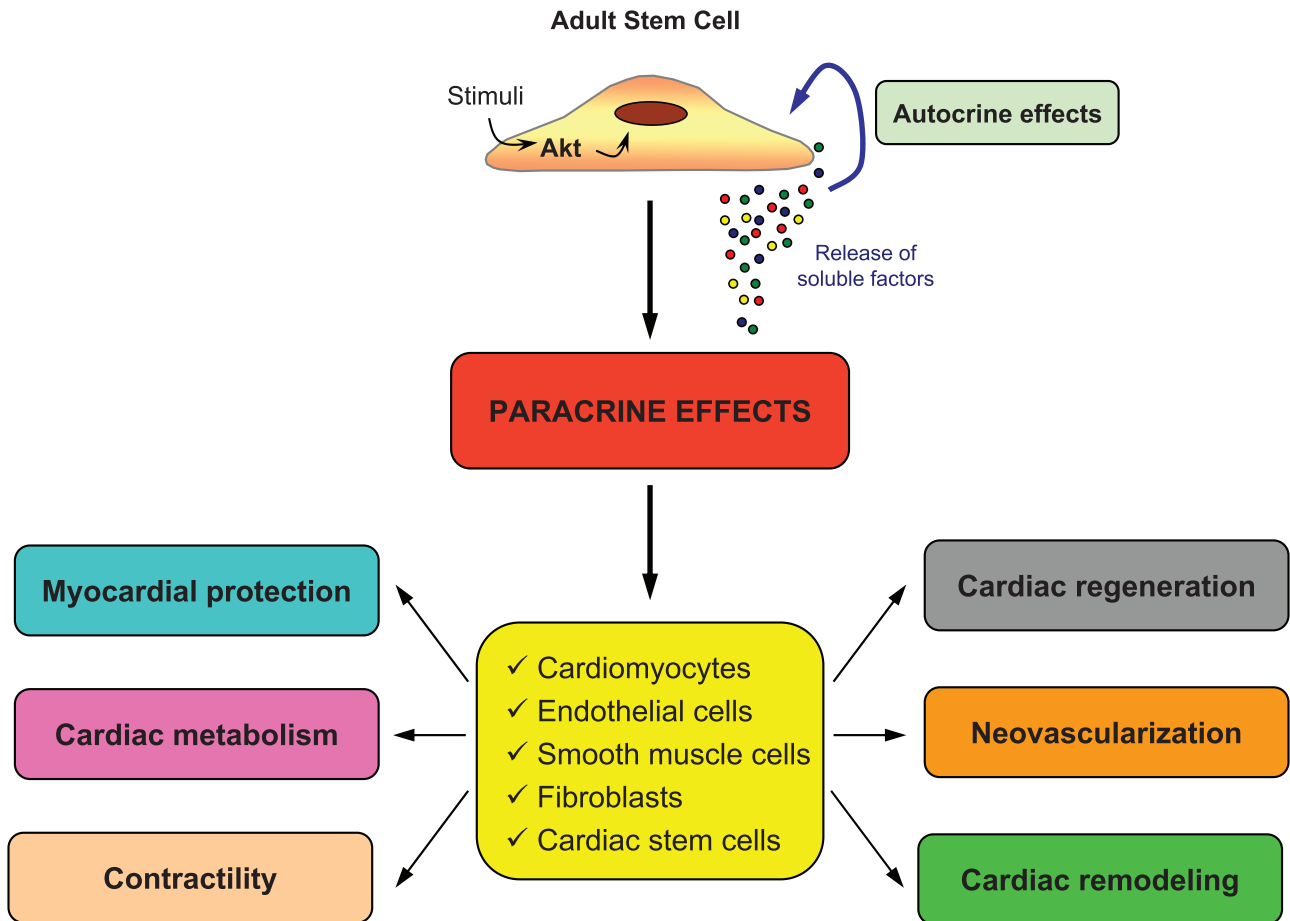
Putative Secreted Factor	Abbreviation	Proposed Function
Adrenomedullin	ADM	Cytoprotection
Angio-associated migratory protein	AAMP	Angiogenesis
Angiogenin	ANG	Angiogenesis; cell proliferation
Angiopoetin-1	AGPT1	Cell migration; vessel stabilization
Bone morphogenetic protein-2	BMP2	Development
Bone morphogenetic protein-6	BMP6	Cell differentiation; growth
Connective tissue growth factor	CTGF	Angiogenesis; cell growth
Endothelin-1	EDN1	Cytoprotection; cell proliferation
Fibroblast growth factor-2	FGF2	Cell proliferation and migration
Fibroblast growth factor-7	FGF7	Cell proliferation and stabilization
Hepatocyte growth factor	HGF	Cytoprotection; angiogenesis; cell migration
Insulin-like growth factor-1	IGF-1	Cytoprotection; cell migration; contractility
Interleukin-1	IL-1	VEGF induction
Interleukin-6	IL-6	VEGF induction
Interleukin-11	IL-11	Cytoprotection
Kit ligand/stem cell factor	KITLG (SCF)	Cell proliferation and migration
Leukemia inhibitory factor	LIF	Cell proliferation; cytoprotection
Macrophage migration inhibitory factor	MIF	Cell proliferation; inflammatory response
Matrix metalloproteinase-1	MMP1	Loosens matrix; tubule formation
Matrix metalloproteinase-2	MMP2	Loosens matrix; tubule formation
Matrix metalloproteinase-9	MMP9	Loosens matrix
Monocyte chemoattractant protein-1	MCP-1	Monocyte migration
Macrophage-specific colony-stimulating factor	M-CSF	Monocyte proliferation/migration
Placental growth factor	PGF	Cell proliferation
Plasminogen activator	PA	Degrading matrix molecules
Platelet-derived growth factor	PDGF	Cell proliferation and migration
Pleiotrophin	PTN	Cell proliferation
Secreted frizzled-related protein-1	SFRP1	Development
Secreted frizzled-related protein-2	SFRP2	Development
Stem cell-derived factor-1	SDF-1	Progenitor cell homing
Thrombospondin-1	THBS1	Cell migration
Thymosin- $\beta$ 4	TMSB4	Cell migration; cytoprotection
Tissue inhibitor of metalloproteinase-1	TIMP-1	Cell migration
Tissue inhibitor of metalloproteinase-2	TIMP-2	Cell migration
Transforming growth factor- $\beta$	TGF- $\beta$	Vessel maturation; cell proliferation
Tumor necrosis factor- $\alpha$	TNF- $\alpha$	Degrade matrix molecules; cell proliferation
Vascular endothelial growth factor	VEGF	Cytoprotection; proliferation; migration; angiogenesis

focus our attention on stem cell paracrine actions in heart repair.

### Paracrine Mechanisms

There is a growing body of evidence supporting the hypothesis that paracrine mechanisms mediated by factors released by the ASCs play an essential role in the reparative process observed after stem cell mobilization or injection into infarcted hearts. It has been shown that ASCs, particularly MSCs, produce and secrete a broad variety of cytokines, chemokines, and growth factors that may potentially be involved in cardiac repair (Table 1).<sup>28</sup> Furthermore, hypoxic stress increases the production of several of these factors.<sup>29</sup>

Tissue concentrations of proteins such as vascular endothelial growth factor (VEGF), basic fibroblast growth factor (bFGF), hepatocyte growth factor (HGF), insulin-like growth factor (IGF)-I, and adrenomedullin, just to name some, are significantly increased in injured hearts treated with MSCs or multipotent human BM stem cells (hBMSCs).<sup>30,31</sup> Strong support of a paracrine mechanism for cardiac repair comes from experimental studies in which the administration of conditioned medium (CM) from ASCs is able to recapitulate the beneficial effects observed after stem cell therapy. We have demonstrated that CM from MSCs, particularly from genetically modified MSCs overexpressing Akt-1 (Akt-MSCs), exerts cardiomyocyte protection.<sup>25,26</sup> Takahashi et



**Figure 2.** Paracrine/autocrine mechanisms in stem cell signaling and therapy. ASCs release biologically active substances in a temporal and spatial manner in response to specific environmental stimuli such as ischemia. These factors influence the microenvironment by exerting paracrine actions on different cell types, leading to tissue protection, repair, and regeneration. The putative factors may also exert autocrine actions modulating the biology of stem cells including self-renewal and proliferation.

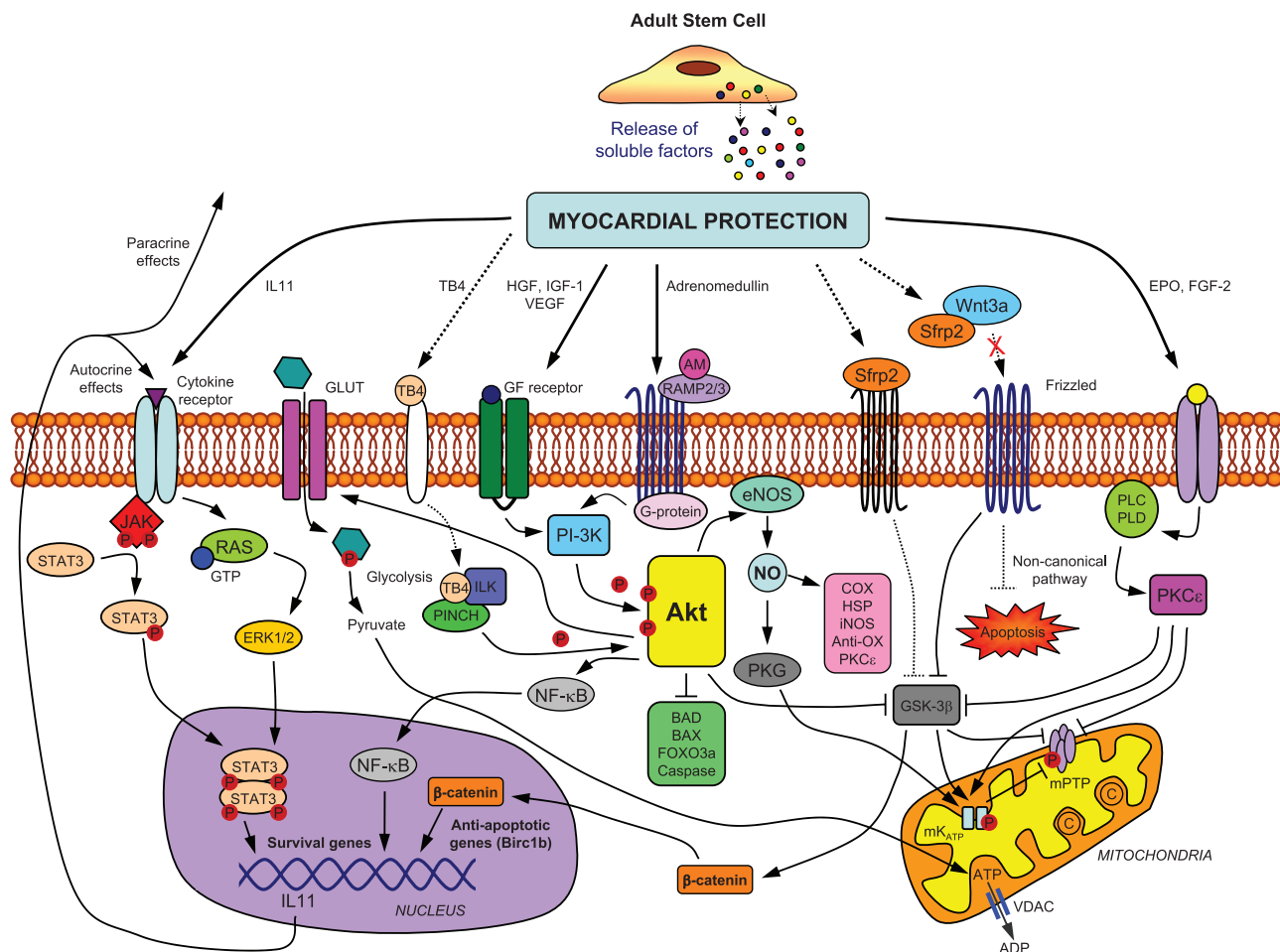
al<sup>32</sup> injected CM from BM-MNCs into acutely infarcted hearts and observed increased capillary density, decreased infarct size, and improved cardiac function compared with controls.

The paracrine factors may influence adjacent cells and exert their actions via several mechanisms. Myocardial protection and neovascularization are the most extensively studied. Furthermore, the postinfarction inflammatory and fibrogenic processes, cardiac metabolism, cardiac contractility, and/or endogenous cardiac regeneration may also be positively influenced in a paracrine fashion (Figure 2). It is likely that the paracrine mediators are expressed/released in a temporal and spatial manner exerting different effects depending on the microenvironment after injury. In addition, these released factors may have autocrine actions on the biology of stem cells themselves (Figure 2).<sup>33</sup> Thus, the paracrine/autocrine hypothesis extends the traditional concept of stem cell niche to include the influence of stem cell released factors on the microenvironment modulating stem cell biology and tissue response.

### Myocardial Protection

An immediate paracrine effect of stem cells in an ischemic environment is the release of cytoprotective molecules that

increase cardiomyocyte survival (Figure 3). Our group characterized the spectrum of BM stem cell paracrine actions and demonstrated that MSCs exert direct cytoprotective action on ischemic cardiomyocytes. In particular, we showed that cell culture medium conditioned by hypoxic MSCs can reduce apoptosis and necrosis of isolated rat cardiomyocytes exposed to low oxygen tension.<sup>25</sup> The cytoprotective effect was greatly enhanced in MSCs overexpressing the gene Akt-1 (Akt-MSCs) *in vitro*. To further validate the protective properties of the MSCs, we studied the effect of the CM *in vivo*, using a rat experimental model of coronary occlusion. Concentrated CM was injected into the heart at the infarct border zone 30 minutes after left coronary occlusion. After 72 hours, the infarct size and the cardiomyocyte apoptotic index were reduced, albeit modestly, in animals treated with CM from MSCs (MSC-CM) compared with those treated with saline. In contrast, a dramatic reduction of infarct size and cardiac apoptosis was observed after administration of CM from Akt-MSCs (Akt-MSC-CM). These data showed that MSCs exert cardiac protective effect through the release of paracrine factors and that the activation of the Akt pathway markedly enhances the production/release of these putative molecules. In a follow-up study, we confirmed our previous results and documented how the limitation of the infarct size was



**Figure 3.** Proposed factors and signaling pathways involved in stem cell-mediated myocardial protection.<sup>9,26,90–95</sup> It has been shown that ASCs mediate cardioprotection by producing and releasing soluble mediators with known cytoprotective properties. Most of these factors act through the activation of the prosurvival phosphatidylinositol 3-kinase (PI3K)/Akt pathway. Factors such as FGF-2 and erythropoietin (EPO) can activate the protein kinase C pathway, which has been shown to mediate cardioprotection. IL-11 (IL11) also activates survival signaling cascades in PI3K/Akt and extracellular signal-regulated kinase (ERK)1/2/STAT3-dependent fashion. The mechanisms of action through which Sfrp2 and TB4 lead to cardioprotection are partially undetermined and need to be further clarified. Finally, other factors and pathways are certainly involved but are still unidentified. TB4 indicates thymosin  $\beta$ 4; GF, growth factor; C, cytochrome c; GLUT, glucose transporter; VDCC, voltage-dependent anion channel.

matched by preservation of cardiac function.<sup>26</sup> To verify whether Akt overexpression upregulated the expression of secreted factors, we tested by quantitative RT-PCR some candidate genes encoding for molecules known to be released by MSCs. Our data showed that VEGF, bFGF, HGF, IGF-1, and thymosin  $\beta$ 4 (TB4) were significantly upregulated in the Akt-MSCs at baseline normoxia and increased further after exposure to hypoxia. After exposure to hypoxia, native MSCs also upregulated VEGF, bFGF, HGF, and TB4, albeit to a lesser extent than the Akt-MSCs. Recently, our original findings in rodents have been successfully replicated by others also in a large animal model. Indeed, Akt-MSCs injected into pig infarcted hearts led to limitation of infarct size and preservation of heart function.<sup>34</sup>

Other groups have confirmed the paracrine cytoprotective effects exerted by BM-derived stem cells on ischemic cardiomyocytes.<sup>32,35,36</sup> Uemura et al recapitulated our in vitro data adopting a different approach.<sup>35</sup> Freshly isolated adult mouse cardiomyocytes were exposed for 3 hours to hypoxia. Positive annexin V staining and DNA laddering were both indicative of apoptosis. However, if the cardiomyocytes were

cocultured with BM-MSCs, hypoxia-induced apoptosis was significantly reduced. High levels of VEGF, bFGF, IGF-1, and stromal cell-derived factor (SDF)-1 were present in the MSC-CM, especially after exposure to hypoxia. To confirm the cytoprotective effect in vivo, the authors injected green fluorescent protein-labeled MSCs into infarcted mouse hearts. Three groups were considered: sham, MSCs and hypoxia-preconditioned MSCs. The cells engrafted mostly in the border area. However, the frequency of green fluorescent protein-positive cardiomyocytes was very low and did not differ between the 2 cell groups. TUNEL staining showed that the number of apoptotic cardiomyocytes was significantly reduced in MSC-treated animals, particularly when preconditioned cells were administered. Accordingly, infarcted area and ventricular remodeling were significantly prevented in animals treated with hypoxic MSCs compared with those receiving normoxic MSCs.

Takahashi et al showed that rat BM-MNCs also produce and release various cytoprotective factors, including VEGF, PDGF, IL-1 $\beta$ , and IGF-1, some of which are significantly



upregulated by hypoxia.<sup>32</sup> Administration of CM from BM-MNCs cultured under normoxia or hypoxia inhibited apoptosis *in vitro* and reduced infarct size *in vivo*. Also, human BM-MNCs exert potent cytoprotective effects.<sup>37</sup> Kubal et al exposed muscle cells from the atrial appendage of patient undergoing elective cardiac surgery to hypoxia/reperfusion stress. When cardiac cells were coincubated with BM-MNCs, harvested from the same patients, reduction of cell necrosis and apoptosis was documented. Of note, coincubation with control ECs or keratinocytes did not result in cytoprotection, suggesting that the effect was specific for BM-MNCs. Finally, it has been shown that also hBMSCs induce cardiac protection.<sup>30</sup>

### Neovascularization

Another important biological process positively influenced by stem cells in a paracrine fashion is neovascularization. Despite evidence that BM-derived stem or progenitor cells incorporate into vascular structures, several studies suggest that only a small number of vessels contain donor cells. The molecular processes leading to angiogenesis and arteriogenesis involve mediators such as nitric oxide, VEGF, bFGF, HGF, angiopoietin, and others. These molecules lead to EC and VSMC migration, proliferation, vessel enlargement and maturation, and synthesis of extracellular matrix. As described earlier, it has been shown that BM stem cells can express proangiogenic molecules.<sup>29</sup> Accordingly, it has been hypothesized that the release of putative proangiogenic factors may play an important role in determining the increase in capillary density and collateral development observed in ischemic tissues of animals treated with stem cells. For example, it has been reported that the injection of BM-MNCs into a zone of swine heart made ischemic by coronary ligation resulted in a significant increase of regional blood flow and capillary density at 3 weeks.<sup>38</sup> The authors showed that the BM-MNCs injected expressed bFGF, VEGF, and angiopoietin-1 and that the cardiac levels of these angiogenic ligands were significantly increased 3 weeks after stem cell injection compared with controls. Furthermore, the cardiac levels of interleukin (IL)-1 $\beta$  and tumor necrosis factor (TNF)- $\alpha$  were markedly increased after BM-MNC administration. Because IL-1 $\beta$  and TNF- $\alpha$  also were shown to have angiogenic activity, the authors concluded that the released factors likely contributed to stimulate angiogenesis in BM-MNC-treated animals. The proangiogenic paracrine action of BM-MNCs has been validated by the documentation of increased microvessel density in ischemic hearts injected solely with CM from MNCs.<sup>32</sup>

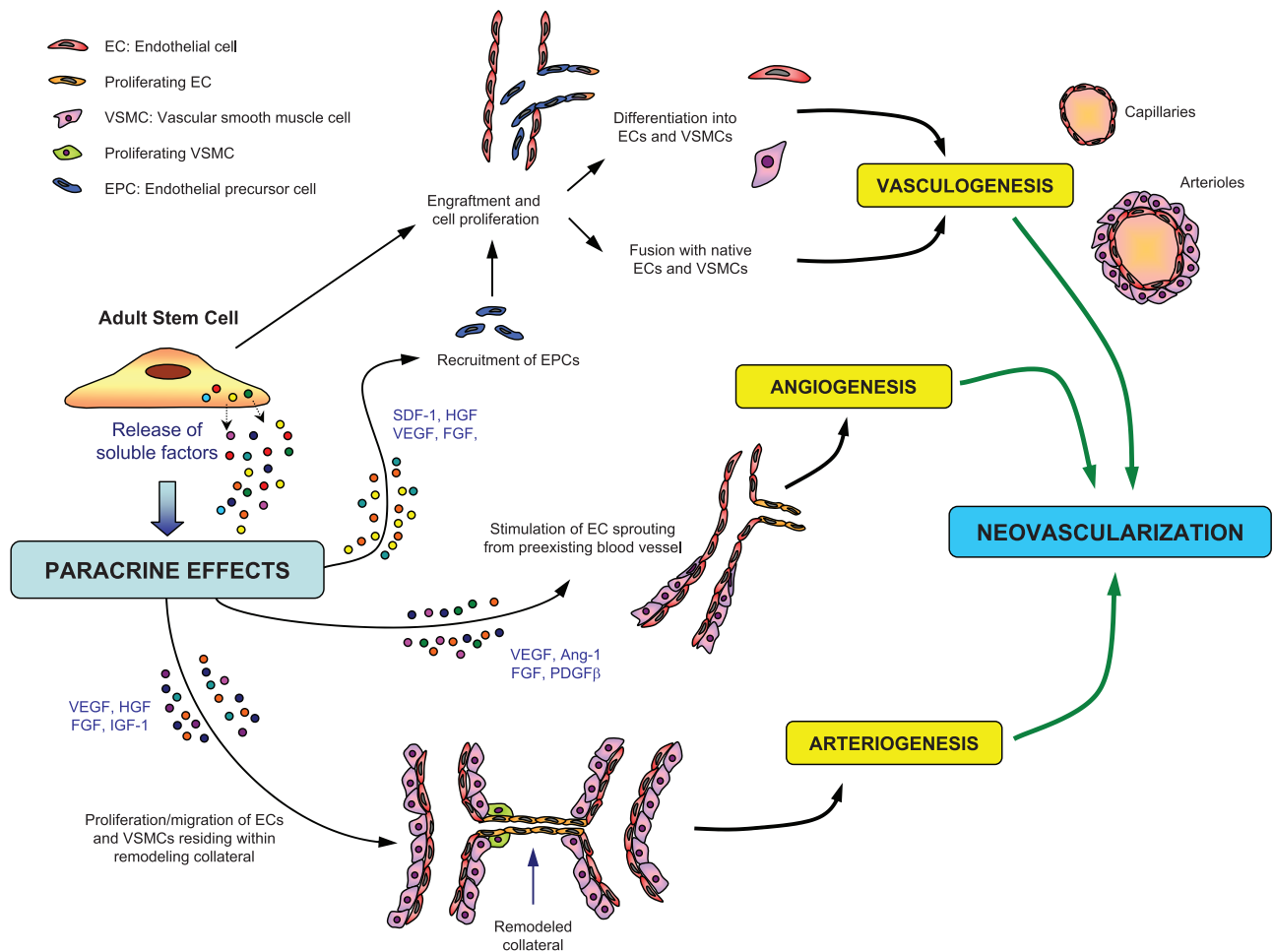
We and others have demonstrated that MSCs represent a source of paracrine proangiogenic and proarteriogenic factors.<sup>26,29,39</sup> Data from Epstein and colleagues have suggested that *in vivo* local delivery of MSCs augments collateral perfusion through paracrine mechanisms.<sup>27</sup> These authors injected  $1 \times 10^6$  MSCs in the adductor muscle of mice 24 hours after femoral artery ligation. Compared with controls injected with medium or mature ECs, distal limb perfusion improved and conductance vessels increased in number and total cross-sectional area. Surprisingly, labeled MSCs were dispersed between muscle fibers but were not seen incorpo-

rated into mature collaterals. On the other hand, protein levels of VEGF and bFGF were significantly increased in the muscle of MSC-treated animals compared with controls; furthermore, colocalization of VEGF and transplanted MSCs within adductor tissue was documented. The authors concluded that MSCs contributed to collateral remodeling through paracrine mechanisms. Gene expression profiling of MSCs grown under normal conditions or under hypoxia stimulation allowed to document that these cells express a wide range of arteriogenic cytokines at baseline and that several of them are upregulated by hypoxia.<sup>29</sup> The gene array data were confirmed using ELISAs and immunoblotting of the MSC-CM. Furthermore, it was shown that MSC-CM promoted proliferation and migration of ECs and VSMCs in a dose-dependent manner *in vitro* and enhanced collateral flow recovery and remodeling in a model of hindlimb ischemia *in vivo*. Other studies testing MSC transplantation in experimental infarcted hearts reported an increase in capillary density in treated animals compared with controls, despite the presence of few ECs of donor origin.<sup>40–42</sup> In these cases, even though not directly proven, a proangiogenic paracrine action seems the most reasonable explanation to the effects observed.

Finally, it has been shown that EPCs can enhance angiogenesis by releasing cytokines and chemokines. In particular, VEGF and SDF-1 released in the CM by EPCs seem to promote the migration of mature ECs *in vitro* through differentiation-independent mechanisms.<sup>43</sup> In addition, several reports showed that transplantation of EPCs into ischemic hearts promotes angiogenesis and arteriogenesis *in vivo*.<sup>44–46</sup> Taken together, all of these reports show that, besides direct vasculogenesis, ASCs improve neovascularization of ischemic tissues through proangiogenic and proarteriogenic paracrine effects (Figure 4).

### Cardiac Remodeling

Besides cytoprotection and neovascularization, paracrine factors released by transplanted stem cell may alter the extracellular matrix, resulting in more favorable postinfarction remodeling and strengthening of the infarct scar. It has been shown that direct hMSC injection into ischemic rat hearts decreases fibrosis, apoptosis, and left ventricular (LV) dilatation, whereas it increases myocardial thickness; this results in the preservation of systolic and diastolic cardiac function without evidence of myocardial regeneration.<sup>47</sup> In animal models, MSC transplantation decreases fibrosis in the heart<sup>31</sup> and other organs such as lung,<sup>48</sup> liver,<sup>49</sup> and kidney.<sup>50</sup> It has been shown that MSCs express a number of molecules involved in biogenesis of extracellular matrix such as collagens, metalloproteinases (MMPs), serine proteases, and serine protease inhibitors, suggesting that transplanted MSCs can inhibit the fibrosis through paracrine actions.<sup>39</sup> Xu et al evaluated the effects of grafting MSCs on extracellular matrix in infarcted rat hearts.<sup>51</sup> They showed that MSC transplantation significantly attenuated the increased cardiac expression of collagen types I and III, tissue inhibitor of metalloproteinase (TIMP)-1, and transforming growth factor (TGF)- $\beta$  observed in infarcted control hearts. Nagaya and colleagues<sup>52</sup> found that MSC-CM significantly attenuated cardiac fibro-



**Figure 4.** Mechanisms involved in neovascularization. In contrast to the embryonic heart vasculature, the adult heart vessels are quiescent. Only when under stress or in the presence of pathological conditions, such as myocardial infarction, does the coronary vascular bed expand. ASCs are involved in postnatal neovascularization, which encompasses 3 different mechanisms. The first is referred to as postnatal vasculogenesis, which consists in the assembly of new blood vessels by fusion and differentiation of endothelial precursor cells originating from the bone marrow. The second mechanism is angiogenesis and consists of the sprouting of new vessels from preexisting vessels. The third mechanism is collateral enlargement and muscularization, namely arteriogenesis. The release of proangiogenic and proarteriogenic factors by transplanted stem cells positively influences neovascularization in a paracrine fashion.

blast proliferation and inhibited type I and type III collagen expression in cardiac fibroblasts; in addition, they showed that collagen activity in the MSC-CM was as high as the activity in the medium conditioned by cardiac fibroblasts. The authors concluded that MSCs exerted paracrine antifibrotic effects, at least in part, through inhibition of cardiac fibroblast proliferation and types I and III collagen synthesis.

Important data supporting the antiremodeling effect exerted via paracrine action by BM-derived cells come from studies testing stem cell therapy to treat nonischemic cardiomyopathy. Nagaya and colleagues injected BM-MSCs into the myocardium of rats in which dilated cardiomyopathy was produced by inducing experimental myocarditis.<sup>31</sup> Compared with vehicle injection, MSC administration significantly increased capillary density and, most importantly, decreased the collagen deposition in the myocardium, resulting in decreased LV end-diastolic pressure and increased LV maximum dP/dt. The importance of paracrine mechanisms in this particular experimental model was underscored by the limited number of MSC-derived cardiomyocytes, which was clearly

insufficient to result in the recovery of cardiac function reported. Of note, relative quantification of cardiac proteins showed that MMP-2 and MMP-9 significantly increased in dilated cardiomyopathy, whereas in MSC treated hearts, MMP levels were comparable to sham. Even though the underlying mechanism remains unclear, taken together, these data suggest that BM-derived ASC transplantation may influence extracellular remodeling in heart failure.

Stem cells may also produce and release local signaling molecules that limit local inflammation when injected into injured tissues. This hypothesis seems to be supported by the fact that expression profiling of adult progenitor cells has revealed expression of genes typically associated with enhanced DNA repair, antioxidant enzymes, and genes linked with detoxifier systems.<sup>53</sup> Ohnishi et al<sup>54</sup> demonstrated that MSC transplantation into a rat model of acute myocarditis attenuated the increase in CD68<sup>+</sup> inflammatory cells and monocyte chemoattractant protein (MCP)-1 expression in the myocardium and improved cardiac function. Isolated adult rat cardiomyocytes (ARVCs) cultured



in standard conditions were injured by MCP-1, which may play an important role in myocarditis<sup>55</sup>; in contrast, in the presence of MSC-CM, the MCP-1-induced injury was significantly attenuated.

### Cardiac Contractility and Metabolism

Some evidence suggests that the administration of ASCs positively influences also cardiac contractility. For example, with regard to the early functional improvement of acutely infarcted hearts after injection of Akt-MSC-CM, the effect may be the consequence of myocardial protection leading to infarct size limitation and/or the direct action of inotropic factors released by the cells. As for the former mechanism, it has been well documented that therapies able to limit myocardial infarct size can prevent ventricular dysfunction.<sup>56</sup> In support of the latter, we observed, in the presence of the CM from hypoxic Akt-MSCs, a marked increase in spontaneous contractile activity in ARVCs exposed to prolonged hypoxia.<sup>26</sup> Such contractile activity was very different from the typical spontaneous contractility observed when the ARVCs are maintained in standard growth conditions. In this case, the vigorous and synchronized contraction observed may suggest the presence of inotropic factors in the CM able to positively influence the contractile properties of ARVCs. Preliminary experiments on freshly isolated adult rat cardiomyocytes exposed to standard growth medium or to different concentrations of MSC-CM or Akt-MSC-CM seem to confirm that MSCs do release inotropic factors that positively modulate cell contractility. Indeed, using an edge-to-edge detection system, we observe that cell shortening, maximal rate of relengthening (+dL/dt), and maximal rate of shortening (-dL/dt) are significantly improved in the presence of CM from hypoxic MSCs, particularly Akt-MSCs, compared with standard conditions (unpublished data). Results from other groups would confirm the paracrine action of BM-derived stem cells on cardiomyocyte contractility. For example, Takahashi et al showed that CM from BM-MNCs preserved the contractility capacity of ARVCs.<sup>32</sup> Fractional shortening and  $\pm$ dL/dt of ARVCs cultivated for 72 hours in standard growth medium were significantly lower compared with those recorded at baseline. Conversely, cell contractility parameters did not decrease significantly when ARVCs were cultured in the presence of CM from BM-MNCs preexposed to normoxia or hypoxia. Of note, the supernatant from hypoxic BM-MNCs was more effective compared with CM from normoxic cells in preserving ARVC contractility. This observation further suggests that production and release of the factors mediating inotropic paracrine effects are increased under hypoxia. More detailed experiments are needed to elucidate the pathways and the mediators involved. At the moment, the nature and identity of putative molecules can only be hypothesized. For example, it is known that, in addition to its growth-promoting and antiapoptotic actions, IGF-I can increase cardiomyocyte contractility *in vitro*<sup>57</sup> and improve myocardial function both in normal and infarcted adult rat hearts.<sup>58,59</sup> The possibility of nonpeptidic molecules mediating this effect cannot be excluded.

Interestingly, Dhein et al have reported that administration of BM-derived stem cells in doxorubicin-induced decompensated

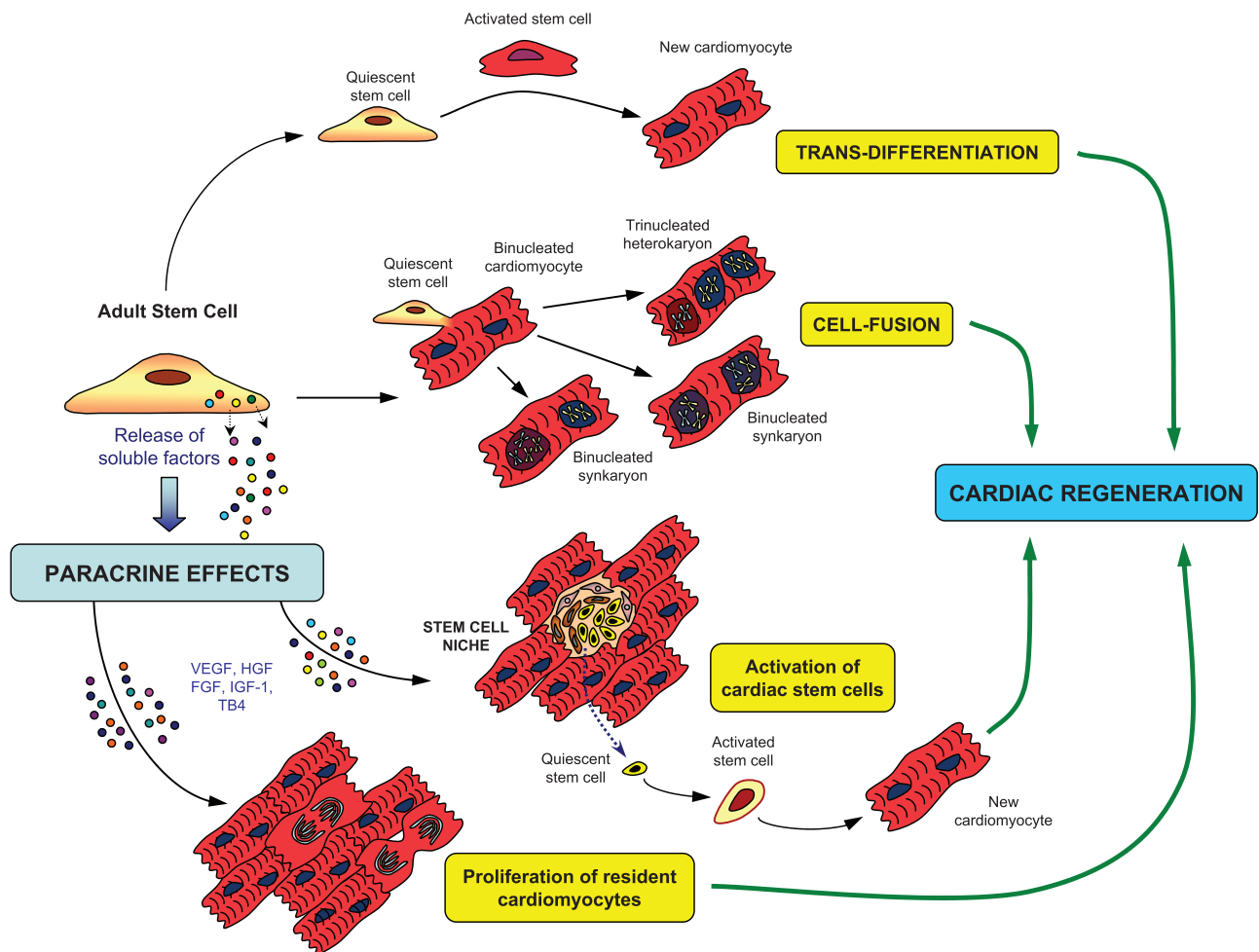
rabbit hearts significantly limited the downregulation of  $\beta$ -adrenoceptor normally present in this heart failure model and significantly increased cardiac contractility measured *in vivo*.<sup>60</sup> It is well known that  $\beta$ -adrenoceptors couple to adenylate cyclase and mediate positive inotropic effects of catecholamines. In this particular case, the positive and significant correlation between  $\beta$ -adrenoceptor density and contractility described would support the hypothesis on a relationship between these 2 parameters. Interestingly, in failing hearts receiving BM cell transplantation  $\beta$ -adrenoceptor density was nearly normalized in the septum, whereas it was still below the normal level in the left ventricle. Considering that the cells were injected in the free wall and that the number of engrafted cells was low, the authors proposed that the effects observed might be attributable to paracrine action. However, it cannot be excluded that the improved hemodynamic situation resulted in decreased catecholamine levels and that this consequently led to attenuation of  $\beta$ -adrenoceptor downregulation. Experiments on isolated cardiomyocytes cocultured with BM-derived stem cells or in the presence of CM may help to clarify this issue.

It has also been suggested that administration of BM-derived cells may positively affect cardiac metabolism in ischemic hearts. Feygin et al<sup>61</sup> examined whether mesenchymal stem cell transplantation-induced beneficial effects are secondary to paracrine-associated improvements in LV contractile performance, wall stress, and myocardial bioenergetics in hearts with postinfarction LV remodeling in pigs. They demonstrated that hearts in the AMI group developed severe contractile dyskinesia in the infarct zone and border zone, whereas MSC transplantation significantly improved contractile performance from dyskinesia to active contraction. Border zone systolic wall stress was severely increased in infarcted hearts but significantly improved after MSC transplantation. The border zone demonstrated profound bioenergetic abnormalities in infarcted hearts, which were attenuated after MSC transplantation. Because of low cell engraftment, the authors postulated that MSCs did not provide a structural contribution to the damaged heart and concluded that the observed beneficial effects likely resulted from paracrine repair mechanisms.

### Cardiac Regeneration

It has been proposed that ASCs, when injected into the injured myocardium, can proliferate and transdifferentiate into cardiomyocytes or fuse with native cardiomyocytes thereby regenerating the lost myocardium.<sup>7</sup> Some investigators have recently proposed a further intriguing hypothesis: exogenous stem cell transplantation may activate resident CSCs and/or stimulate cardiomyocyte replication via paracrine action, thus enabling endogenous cardiac regeneration (Figure 5). It is indeed conceivable that some of the factors released by transplanted ASCs may enhance proliferation, mobilization, differentiation, survival, and function of endogenous cardiac progenitors or even restoration of stem cell niches.

Currently, there are no studies directly examining the effect of ASC transplantation on endogenous cardiac progenitors. However, there is evidence suggesting such effect. For



**Figure 5.** Mechanisms involved in cardiac regeneration. Potentially, ASCs may lead to cardiac regeneration via different mechanisms. Transdifferentiation into newly formed cardiomyocytes has been the first proposed way. Cell fusion of stem cells with native cardiomyocytes represents a second possibility, but the biological meaning of this event remains unclear. Finally, soluble paracrine factors released by the stem cells may induce activation, migration, and differentiation of CSCs and/or enhance proliferation of resident cardiomyocytes.

example, it has been shown that intramyocardial administration of HGF and IGF-1 at the infarct border zone induces CSC migration, proliferation, and differentiation.<sup>62</sup> Because MSCs release both HGF and IGF-1, particularly under hypoxic stimulation,<sup>26</sup> it is reasonable to hypothesize that MSC injected into ischemic hearts may attract and activate resident CSCs. Indirect evidence supporting this hypothesis has been documented in a study in which MSCs were injected into infarcted pig hearts.<sup>63</sup> Immunohistochemical analysis performed after 10 days revealed the presence, only in MSC-treated animals, of supposedly newly formed cardiomyocytes, some of which stained positive for c-Kit, a marker expressed by CSCs, and others for Ki67, a marker of cell proliferation. Unfortunately, the costaining for c-Kit and Ki67 was not performed, so that the true origin of those replicating cardiomyocytes could not be determined. However, the authors concluded that endogenous cardiac regeneration was present. Also, hBMSCs may induce proliferation of host cardiomyocytes.<sup>30</sup> Yoon et al reported that intramyocardial transplantation of hBMSCs after myocardial infarction resulted in robust engraftment of transplanted cells,

which transdifferentiated into cardiomyocytes, and proliferation of host cardiomyocytes and ECs. To determine the proliferative fraction of host myocardial cells, the authors administered 5-bromodeoxyuridine to label all cells that entered the S phase of the cell cycle. Appropriate immunohistochemistry analysis revealed, both in the periinfarct and normal portion of the heart, a significantly higher number of proliferating cardiomyocyte and ECs in sections from hBMSC-transplanted animals compared with controls. Also, the staining for Ki67 confirmed that the transplanted hBMSCs augmented proliferation of host myocardial cells. Interestingly, in the same study, the paracrine cytoprotective and proangiogenic actions exerted by BM-derived stem cells were further confirmed, and the mRNA levels of HGF, IGF-1, VEGF, and bFGF were significantly upregulated in hBMSC-treated hearts compared with controls.

An *in vitro* study has shown that EPCs are also able to induce migration and growth of c-Kit<sup>+</sup> cardiac progenitor cells by secretion of cytokines such as VEGF, IGF-1, and SDF-1.<sup>43</sup> Although the *in vivo* experiment remains to be performed, the implication is that the cytokines released

locally within the myocardium by the EPCs may activate the regenerative reservoir of the heart and possibly contribute to the beneficial effects observed in infarcted hearts treated with this cell population. The presence of cardiomyocytes or CSCs actively dividing was analyzed also in infarcted hearts treated with HSCs, but the results were negative.<sup>24</sup> The presence and the role of endogenous cardiac regeneration after intramyocardial BM-derived stem cell administration requires further in depth investigation.

### Improving Our Understanding of Stem Cell Biology

The demonstration that stem cells express and release biologically active mediators has important implications in the understanding of stem cell biology and action. As discussed earlier, the release of paracrine cytokines can influence the stem cell microenvironment that is part of the stem cell niche. In addition, the paracrine mediators can influence the biology of adjacent parenchymal and stromal cells in normal and pathological conditions. In response to tissue injury, stem cells can express and secrete important paracrine factors in a temporal and spatial manner that can enhance cell survival and activate endogenous mechanisms of endogenous repair and regeneration. There is a dynamic regulation and interaction of stem cell cytokine that influences tissue survival, repair, and regeneration, including the activation of resident and circulating extracardiac stem cells. Specific studies will need to be carried out to better understand how stem cells mediate their favorable effects. In particular, the factors and the pathways involved should be defined. Studying in detail the temporal and spatial expression of paracrine factors in the heart after stem cell administration will help researchers to understand the complex process of heart protection, remodeling, repair, and regeneration. Identifying the complete scope and nature of paracrine factors involved in stem cell-mediated cardiac repair is a demanding task, although extremely relevant and worthy of pursuing. Our group used combined genomic and proteomic analyses of Akt-MSCs versus native MSCs<sup>9</sup> and reported that approximately 650 transcripts were differentially regulated between Akt-MSCs and control MSCs. A subanalysis of the data, focused on potential cytoprotective genes, revealed 62 transcripts encoding for 51 unique genes potentially contributing to the paracrine effects of Akt-MSCs (Table 2). Among these genes, the secreted frizzled related protein 2 (Sfrp2) was the most dramatically upregulated.<sup>9</sup> We then showed that Sfrp2 exerts multiple biological effects including cardiac protection.<sup>9,33</sup> Indeed, we have demonstrated that administration of Sfrp2 alone protects ischemic cardiomyocytes and that the pro-survival effect of Akt-MSCs was markedly attenuated on knock-down of Sfrp2 with siRNA. Furthermore, we have shown that the mechanism of action of Sfrp2 is through modulation of Wnt signaling pathway. Using the same approach, we have also discovered several novel factors that are expressed in the Akt activated stem cells whose nature and importance are under intense investigation (Table 3). A comprehensive characterization of the paracrine factors and their pathways will allow the identification of possible novel therapeutic targets and/or drugs.

Finally, these stem cell released factors have been shown to exert autocrine effects on the cells themselves, influencing cell survival, self renewal, cell growth.<sup>33</sup> The identification and characterization of the autocrine factors may improve our understanding of how stem cells regulate their own fate, behavior, stemness, lineage commitment, and many aspects of their biology. Thus, future research on the autocrine-paracrine paradigm can significantly increase our understanding of the biology and actions of stem cells.

### Future Directions in Stem Cell Therapy for the Heart

#### Cell Therapy

Despite the encouraging results regarding the therapeutic potential of ASCs to treat heart disease, many obstacles are in the way of broad clinical application. A major issue is represented by the choice of cell type to administer. We believe that this decision should be influenced to a large extent by the nature of the injury. For example, if the goal is to rescue nonnecrotic ischemic myocardium, it may be desirable to use an ASC type that secretes cytoprotective factors or to use EPCs to induce vascular regeneration. On the other hand, if the purpose is to regenerate infarcted myocardium, it would be more appropriate to use an undifferentiated cell type with cardiomyogenic and vasculogenic potentiality. However, this choice is complicated by the fact that we still do not clearly know the cardiomyogenic potentiality of each ASC type. As anticipated, certain ASC subsets more readily differentiate to a cardiomyogenic lineage, but questions remain about stem cell plasticity and the frequency of cardiac differentiation events. The challenge will be to identify the comprehensive biochemical and environmental cues controlling this process, so as to optimize cardiac differentiation. Past studies have relied almost exclusively on morphological and molecular evidence to demonstrate a cell fate change to a cardiomyogenic lineage following manipulation in culture or transplantation into living animals. Future experimental studies, both *in vitro* and *in vivo*, will require demonstration that the transplanted cells differentiate, integrate, and functionally contribute to improve cardiac function.

Another problem is the extensive loss of the cells once transplanted. Regardless of cell type, many studies have shown that the majority of cells successfully delivered to the heart die within the first weeks.<sup>19,23,40,64,65</sup> To overcome this challenge, investigators have transplanted extremely large number of cells in experimental settings. However, translating the same doses of cells in humans would be difficult in some cases. For example, some specific cell populations, like Lin<sup>-</sup> cKit<sup>+</sup> HSCs or SP cells, are extremely rare and cannot be expanded *ex vivo*. In those cases, translating experimental results to the bedside may represent a difficult task. The causes of cell death in AMI setting are multifactorial and are influenced by the ischemic environment, which is devoid of nutrients and oxygen, coupled with the loss of survival signals from matrix attachments and cell-cell interactions. We and others have conceptualized the idea of improving cell survival by overexpressing protective genes. To optimize this approach, in the future, one may use viral vectors encoding

**Table 2. Genes Coding for Known Secreted Proteins Differentially Expressed in Akt-MSCs Versus Control MSCs Under Normoxic or Hypoxic Conditions**

Gene Name	Gene Symbol	GO Biological Process Description
Inhibin $\beta$ -B	Inhbb	Cell growth and/or maintenance
Bone morphogenetic protein-2	Bmp2	TGF- $\beta$ receptor signaling pathway; embryonic development; organogenesis; cell fate commitment
A disintegrin-like and metalloprotease (reprolysin type) with thrombospondin type 1 motif, 5 (aggrecanase-2)	Adams5	Proteolysis and peptidolysis; protein amino acid prenylation
kit ligand/stem cell factor	Kitl	Cell adhesion; germ cell development
Proliferin	Plf	Angiogenesis
Lipoprotein lipase	Lpl	Lipid metabolism; lipid catabolism
c-fos-induced growth factor	Figf	Regulation of cell cycle; angiogenesis; cell growth and/or maintenance; cell proliferation
Immunoglobulin superfamily containing leucine-rich repeat	Islr	Cell adhesion
Cysteine-rich motor neuron 1	Crim1	Regulation of cell growth
Fibronectin 1	Fn1	Acute-phase response; cell adhesion; metabolism; wound healing
Secreted protein SST3	SST3	...
Latent transforming growth factor $\beta$ -binding protein 2	Ltbp2	Extracellular transport; protein secretion; protein targeting; TGF- $\beta$ receptor signaling pathway
Arginyl aminopeptidase (aminopeptidase B)	Rnpep	Proteolysis and peptidolysis
Thrombospondin 1	Thbs1	Cell adhesion; negative regulation of angiogenesis
Matrix metalloproteinase 11	Mmp11	Proteolysis and peptidolysis; collagen catabolism
Angiogenin	Ang	Angiogenesis
Thrombospondin 2	Thbs2	Cell adhesion
Mannan-binding lectin serine protease 1	Masp1	Proteolysis and peptidolysis; complement activation; classic pathway
Fibulin 5	Fbln5	Cell adhesion
Chemokine (C-X-C motif) ligand 12	Cxcl12	Chemotaxis; immune response; brain development; regulation of cell migration; T-cell proliferation
Carboxypeptidase E	Cpe	Proteolysis and peptidolysis
Connective tissue growth factor	Ctgf	Ossification; angiogenesis; regulation of cell growth; DNA metabolism; cell adhesion; cell-matrix adhesion; integrin-mediated signaling pathway; FGF receptor signaling pathway; cell migration
Platelet derived growth factor, alpha	Pdgfa	Regulation of cell cycle; cell growth and/or maintenance; cell proliferation
Angiotensinogen	Agt	Regulation of blood pressure
Chemokine (C-C motif) ligand 7	Ccl7	Transport; chemotaxis; inflammatory response; immune response; signal transduction
Cysteine-rich protein 61	Cyr61	Regulation of cell growth; patterning of blood vessels; chemotaxis; cell adhesion
Osteoglycin	Ogn	Growth factor activity
Chemokine (C-C motif) ligand 2	Ccl2	Chemotaxis; inflammatory response; immune response; signal transduction
Angiopoietin-like 4	Angptl4	Angiogenesis; cell differentiation; cellular response to starvation; multicellular organismal development; negative regulation of apoptosis; negative regulation of lipoprotein lipase activity; positive regulation of angiogenesis; positive regulation of lipid metabolic process; response to hypoxia; signal transduction
Insulin-like growth factor binding protein 4	Igfbp4	Regulation of cell growth
Apolipoprotein D	Apod	Transport
Mesoderm-specific transcript	Mest	Proteolysis and peptidolysis; xenobiotic metabolism; response to toxin
Secreted frizzled-related sequence protein 1	Sfrp1	Development
Angiopoietin 4	Angpt4	Transmembrane receptor protein tyrosine kinase signaling pathway; endoderm development
Matrix metalloproteinase 13	Mmp13	Proteolysis and peptidolysis; collagen catabolism
Superoxide dismutase 3, extracellular	Sod3	Superoxide metabolism

*(Continued)*



**Table 2. Continued**

Gene Name	Gene Symbol	GO Biological Process Description
Sema domain, immunoglobulin domain (Ig), short basic domain, secreted, (semaphorin) 3C	Sema3c	Development; neurogenesis
Hepatocyte growth factor	Hgf	Cellular morphogenesis; proteolysis and peptidolysis; cell proliferation
Leucine-rich repeat containing 17	Lrrc17	...
Lysyl oxidase-like 2	Loxl2	Aging; cell adhesion; protein modification process
Interferon, alpha-inducible protein	G1p2	Immune response
Secreted frizzled-related sequence protein 3	Sfrp3	Development
Interferon-inducible GTPase 1	ligp1	Cytokine- and chemokine-mediated signaling pathway
Vascular endothelial growth factor A	Vegfa	Regulation of cell cycle; angiogenesis; cell growth and/or maintenance; cell proliferation
Adrenomedullin	Adm	Neuropeptide signaling pathway
Adipsin	Adn	Proteolysis and peptidolysis; complement activation; alternative pathway
Pleiotrophin	Ptn	Ossification; learning; cell proliferation; bone mineralization
Serine (or cysteine) proteinase inhibitor, clade E, member 1	Serpine1	Blood coagulation; fibrinolysis
Secreted frizzled-related sequence protein 2	Sfrp2	Development

multiple cytoprotective genes, acting on different cell death and apoptosis pathways. Recently, it has been proposed that preconditioning of ASCs with different cytokines may result in improved cell engraftment.<sup>66</sup> The combination of genetic modification and preconditioning may further enhance cell survival and engraftment. An alternative method would be to seed cell *ex vivo* on a biodegradable polymeric scaffold, followed by *in vivo* engraftment instead of injecting the cells directly into the site of injury.<sup>67</sup> Improvement of ASC survival will ultimately allow us to address cell scalability and to make cell-based therapies more easily applicable to humans.

Importantly, the question of whether cell administration in patients experiencing AMI should be performed immediately after infarction or after the inflammatory process has subsided is not completely resolved. Although experimental data would support early administration, data from the largest randomized clinical trial performed so far (the REPAIR-AMI) showed progressive increase in cell-associated recovery of contractile function as the interval between reperfusion therapy and cell infusion increased.<sup>68</sup> In particular, the beneficial effects of cell infusion on the recovery of contractile function were confined to patients who were treated more

than 4 days after infarct reperfusion, whereas no benefit was observed in patients treated up to day 4 after reperfusion. Prospective trials designed specifically to address this important issue are mandatory.

Safety concerns regarding the proarrhythmic effects following transplantation of ASCs for cardiac repair must be taken into consideration. So far, BM-derived stem cells have not shown proarrhythmic effects in early clinical trials. However, it is not known whether increasing the number of cells that survive or the number of the cells injected will provoke an arrhythmogenic reaction. Tailored preclinical studies should be carried out in small and large animal models with the specific aim to rule completely out that ASCs can induce arrhythmias.

Other unresolved issues are the efficacy and safety concerns surrounding the changes in gene expression and functional properties of ASCs with advancing age and disease.<sup>69</sup> The properties of self-renewal and lineage potentiality of cells harvested from high-risk patients may be affected. We know that both the age and the presence of disease status adversely influence several aspects of the intrinsic characteristics of ASCs. For instance, EPCs from patients with cardiovascular disease display varying degrees of functional impairment, and an inverse correlation has been reported between the number of circulating EPCs and the prevalence of risk factors for CAD.<sup>70</sup> These deficiencies may limit in some settings the therapeutic application of individualized treatment strategy using the patient's own isolated cells. To bypass these problems, using allogeneic cells from young and healthy donors or even cells of fetal origin may represent a good solution. Unfortunately, cell rejection would pose a new problem, requiring immunosuppressive therapies. Interestingly, it has been shown that MSCs display an immunoprivileged phenotype and may not be subject to allogeneic rejection in humans and animals.<sup>18,71,72</sup> Manipulation of telomerase may represent a possible strategy to rejuvenate senescent autologous cells.<sup>73</sup>

**Table 3. Genes Coding for Novel Secreted Proteins Differentially Expressed in Akt-MSCs Versus Control MSCs Under Normoxic or Hypoxic Conditions**

Novel Gene	Molecular Mass of Protein (kDa)	Putative Function
Gene 1	60	Angiogenic factor
Gene 5	15	ECRG4 (esophageal cancer-related gene 4)
Gene 8	120	Extracellular glycoprotein (2 fibronectin domains and Abl3-BP)
Gene 12	40	Survival factor (activates novel kinase for AKT)
Gene 13	7	Not known



Importantly, it should not be overlooked that, in the stem cell analysis, obtaining consistent results among different laboratories still represents a major problem. The use of different cell types, growth conditions, the passaging methods used, and the number of cell passage considered are just some of the variables influencing stem cell research. The introduction of standard operating procedures and nomenclature will be mandatory to optimize our understanding of stem cell biology and clarify the mechanisms of stem cell action. Furthermore, standardization of genomic and proteomic methodologies and strategies between different groups of investigators would facilitate the comparability of the results. In addition, the establishment of shared databases able to contain the ever-increasing amount of data generated by genomics and proteomics studies of stem cells will be mandatory. Several initiatives were already established to characterize numerous existing human embryonic stem cell lines using standardized assay conditions to allow unrestrained comparison of the data sets generated.<sup>74,75</sup> The NIH Stem Cell Unit adopted its own initiative (<http://stemcells.nih.gov/research/nihresearch/scunit>). We envision that similar approaches will be considered also for ASCs in the near future. Combined, the various genomic and proteomic approaches will continue to reveal crucial insights into stem cell biology and consequently on their potential use for tissue reparative therapies.

### Enhancing Beneficial Paracrine Effects Through Genetic Modification

The observation that BM-derived stem cells, particularly those that are genetically modified, may release therapeutic paracrine factors provide an important conceptual advancement in that one can enhance stem cell therapeutic actions through gene transfer. In this context, Akt-MSCs revealed themselves as a useful model to identify possible novel therapeutic molecules, suggesting that genetic modification of stem or progenitor cells may represent an important strategic advancement in regenerative medicine. By combining gene with cell therapy, one may be able to enhance stem cell function and viability. Indeed, genetic modification can improve survival, metabolic characteristics, proliferative capacity, or differentiation of the stem cells. Furthermore, the cells may become a vehicle for gene therapy whose secreted gene products can exert paracrine or endocrine actions that may result in further therapeutic benefits. Our group was the first to conceptualize this approach<sup>76,77</sup> and showed that genetically modified EPCs had greater reparative potential and that MSCs overexpressing the prosurvival gene Akt-1 had greater postimplantation survival and functional benefits than did wild-type cells. Thought as a strategy to increase cell viability, the overexpression of Akt turned out to have many more effects on MSCs, such as the production of secreted factors capable of protecting ARVCs both *in vitro* and *in vivo*. The salutary effects of this approach have been further validated and extended by several groups. BCL-2–engineered MSCs were shown to increase the survival of the MSCs after AMI in rats, leading to higher expression level of VEGF, increased capillary density, and smaller infarct size relative to controls.<sup>78</sup> Tang et al<sup>79</sup> found that a higher number of MSCs

transduced with heme oxygenase (HO)-1 survived when they are injected into infarcted hearts, leading to more efficient healing compared with control MSCs. Based on the data reported, the beneficial effects obtained with the HO-1–MSCs appear also to be primarily attributable to paracrine protective action, even though this hypothesis was not directly addressed in this study. Indeed, the low differentiation rate of MSCs into cardiomyocytes suggested by the authors could not alone explain the structural and functional improvements reported. Thus, as in the case of the Akt-MSCs, the original intervention, intended to increase stem cell viability, might have induced paracrine effects on adjacent myocardium. Similarly, HGF,<sup>80</sup> bFGF,<sup>81</sup> adrenomedullin,<sup>82</sup> or VEGF-engineered MSCs<sup>83</sup> were shown to survive better and to exert more powerful cytoprotection and/or proneovascularization effect compared with control MSCs.

### Protein and Molecular Therapies

The demonstration that stem cells may secrete therapeutic factors provides a potential breakthrough in that, rather than administering cells, one may be able to administer specific proteins produced by these cells for cardiac therapy. It is important to keep in mind that there are therapies currently used to treat post-AMI heart failure leading to improvement of cardiac function without inducing regeneration: angiotensin-converting enzyme inhibitors represent the best example.<sup>84</sup> On the other hand, it is possible that factors released by transplanted cells may influence the microenvironment maintaining stem cell niches in the heart or may activate cardiac progenitors and induce their migration and differentiation. Tailored studies analyzing the fate of both exogenous transplanted cells and resident cardiac progenitors will help clarify the specific role of these cell populations in heart repair.

Transplantation of stem cells for their paracrine effects still represents a reasonable strategy because the beneficial factors remain partly unidentified and because multiple factors might be functioning synergistically. However, if specific paracrine cell–derived factors that improve cardiac function will be identified, then protein-based therapy might be more easily translated into clinical benefits than cell-based therapy. A known quantity of protein can be administered using intravenous, intracoronary, or intramyocardial approaches. The most obvious limitation of protein therapy is the necessity to maintain therapeutic concentration to induce the desired effect for the necessary length of time. Establishing the threshold concentration and the necessary time remains to be determined and represents a difficult task. Different actions may require different concentrations and timing. Substantial differences between animal models and humans further complicate the scenario. For example, it has been shown that a single dose of specific growth factors is effective in enhancing neovascularization in animals but not in humans.<sup>85,86</sup> Protein stability and pharmacokinetic represent other possible hurdles. To overcome these problems, a variety of strategies have emerged for manipulating protein properties: stability, specificity, immunogenicity, and pharmacokinetic.<sup>87</sup> Mechanisms for altering these properties include manipulation of primary structure, incorporation of chemical and posttranslational modifications, and utilization of fusion partner. The

protein and peptide therapeutics have already become an important class of drugs because of advancement in molecular biology and recombinant technology. Currently, most of therapeutic proteins are administered by the parenteral route, which has many drawbacks. Various delivery strategies have evolved over the past few years to improve delivery of proteins and peptides, including the use of biopolymers and nanomaterials for controlled release of proteins,<sup>88,89</sup> and delivery via noninvasive routes such as subcutaneous release or dermal patches. The noninvasive approach remains challenging because of poor absorption, enzymatic instability, and pharmacokinetics and pharmacodynamics of protein therapeutics. Development of an oral dosage form for protein therapeutics is still the most desirable but involves greater challenge. Even though the road to reach optimal protein therapy is full of hurdles, we anticipate that the constant development and application of rational protein design technology will enable significant improvements in the efficacy and safety of existing protein therapeutics, as well as allow the generation of entirely novel classes of proteins and mode of action. In this case, curing AMI with a single protein or, most likely, with a cocktail of proteins may become reality.

### Conclusion

The demonstration of paracrine/autocrine mechanisms improves our understanding of stem cell biology and stem cell action in tissue repair and regeneration. Although stem cell therapy holds promise in the future treatment of heart disease such as AMI, chronic ischemic heart disease, and congestive heart failure, its current use is significantly hampered by biological and technological challenges. Genetic modification of stem cells represents an important advancement because this approach may overcome the issue of cell viability, scalability, immune tolerance, and enhanced functions. Furthermore, the recent demonstration that genetically modified cells may secrete novel therapeutic factors provides a potential strategy in that, rather than administering cells, one may be able to administer specific proteins produced by these cells for cardiac therapy.

### Sources of Funding

This work was supported by National Heart, Lung, and Blood Institute grants RO1 HL35610, HL81744, HL72010, and HL73219 (to V.J.D.); the Edna Mandel Foundation; and the Foundation Leducq (to V.J.D.). M.G. is supported by the Fondazione IRCCS Policlinico San Matteo Pavia, Italy; the Ministero Italiano dell'Università e della Ricerca (MIUR); the Ministero Italiano della Sanità; the Fondazione Cariplo; and the Fondazione Banca del Monte di Lombardia.

### Disclosures

None.

### References

- Quaini F, Urbanek K, Beltrami AP, Finato N, Beltrami CA, Nadal-Ginard B, Kajstura J, Leri A, Anversa P. Chimerism of the transplanted heart. *N Engl J Med*. 2002;346:5–15.
- Beltrami AP, Urbanek K, Kajstura J, Yan SM, Finato N, Bussani R, Nadal-Ginard B, Silvestri F, Leri A, Beltrami CA, Anversa P. Evidence that human cardiac myocytes divide after myocardial infarction. *N Engl J Med*. 2001;344:1750–1757.
- Beltrami AP, Barlucchi L, Torella D, Baker M, Limana F, Chimenti S, Kasahara H, Rota M, Musso E, Urbanek K, Leri A, Kajstura J, Nadal-Ginard B, Anversa P. Adult cardiac stem cells are multipotent and support myocardial regeneration. *Cell*. 2003;114:763–776.
- Deb A, Wang S, Skelding KA, Miller D, Simper D, Caplice NM. Bone marrow-derived cardiomyocytes are present in adult human heart: a study of gender-mismatched bone marrow transplantation patients. *Circulation*. 2003;107:1247–1249.
- Jackson KA, Majka SM, Wang H, Pocius J, Hartley CJ, Majesky MW, Entman ML, Michael LH, Hirschi KK, Goodell MA. Regeneration of ischemic cardiac muscle and vascular endothelium by adult stem cells. *J Clin Invest*. 2001;107:1395–1402.
- Caplice NM, Deb A. Myocardial-cell replacement: the science, the clinic and the future. *Nat Clin Pract Cardiovasc Med*. 2004;1:90–95.
- Dimmeler S, Zeiher AM, Schneider MD. Unchain my heart: the scientific foundations of cardiac repair. *J Clin Invest*. 2005;115:572–583.
- Melo LG, Pachori AS, Kong D, Gnecchi M, Wang K, Pratt RE, Dzau VJ. Molecular and cell-based therapies for protection, rescue, and repair of ischemic myocardium: reasons for cautious optimism. *Circulation*. 2004;109:2386–2393.
- Mirotsov M, Zhang Z, Deb A, Zhang L, Gnecchi M, Noiseux N, Mu H, Pachori A, Dzau V. Secreted frizzled related protein 2 (Sfrp2) is the key Akt-mesenchymal stem cell-released paracrine factor mediating myocardial survival and repair. *Proc Natl Acad Sci U S A*. 2007;104:1643–1648.
- Smith RR, Barile L, Cho HC, Leppo MK, Hare JM, Messina E, Giacomello A, Abraham MR, Marban E. Regenerative potential of cardioprotection-derived cells expanded from percutaneous endomyocardial biopsy specimens. *Circulation*. 2007;115:896–908.
- Messina E, De Angelis L, Frati G, Morrone S, Chimenti S, Fiordaliso F, Salio M, Battaglia M, Latronico MV, Coletta M, Vivarelli E, Frati L, Cossu G, Giacomello A. Isolation and expansion of adult cardiac stem cells from human and murine heart. *Circ Res*. 2004;95:911–921.
- Oh H, Bradfute SB, Gallardo TD, Nakamura T, Gaussin V, Mishina Y, Pocius J, Michael LH, Behringer RR, Garry DJ, Entman ML, Schneider MD. Cardiac progenitor cells from adult myocardium: homing, differentiation, and fusion after infarction. *Proc Natl Acad Sci U S A*. 2003;100:12313–12318.
- Parmacek MS, Epstein JA. Pursuing cardiac progenitors: regeneration redux. *Cell*. 2005;120:295–298.
- Leri A, Kajstura J, Anversa P. Cardiac stem cells and mechanisms of myocardial regeneration. *Physiol Rev*. 2005;85:1373–1416.
- Kawamoto A, Gwon HC, Iwaguro H, Yamaguchi JI, Uchida S, Masuda H, Silver M, Ma H, Kearney M, Isner JM, Asahara T. Therapeutic potential of ex vivo expanded endothelial progenitor cells for myocardial ischemia. *Circulation*. 2001;103:634–637.
- Orlic D, Kajstura J, Chimenti S, Jakoniuk I, Anderson SM, Li B, Pickel J, McKay R, Nadal-Ginard B, Bodine DM, Leri A, Anversa P. Bone marrow cells regenerate infarcted myocardium. *Nature*. 2001;410:701–705.
- Tomita S, Li RK, Weisel RD, Mickle DA, Kim EJ, Sakai T, Jia ZQ. Autologous transplantation of bone marrow cells improves damaged heart function. *Circulation*. 1999;100(suppl II):II-247–II-256.
- Pittenger MF, Martin BJ. Mesenchymal stem cells and their potential as cardiac therapeutics. *Circ Res*. 2004;95:9–20.
- Parsam LB, Wagers AJ, Christensen JL, Kofidis T, Weissman IL, Robbins RC. Haematopoietic stem cells adopt mature haematopoietic fates in ischaemic myocardium. *Nature*. 2004;428:668–673.
- Murry CE, Soonpaa MH, Reinecke H, Nakajima H, Nakajima HO, Rubart M, Pasumarthi KB, Virag JI, Bartelmez SH, Poppa V, Bradford G, Dowell JD, Williams DA, Field LJ. Haematopoietic stem cells do not transdifferentiate into cardiac myocytes in myocardial infarcts. *Nature*. 2004;428:664–668.
- Alvarez-Dolado M, Pardal R, Garcia-Verdugo JM, Fike JR, Lee HO, Pfeffer K, Lois C, Morrison SJ, Alvarez-Buylla A. Fusion of bone-marrow-derived cells with Purkinje neurons, cardiomyocytes and hepatocytes. *Nature*. 2003;425:968–973.
- Nygren JM, Jovinge S, Breitbart M, Sawen P, Roll W, Hescheler J, Taneera J, Fleischmann BK, Jacobsen SE. Bone marrow-derived hematopoietic cells generate cardiomyocytes at a low frequency through cell fusion, but not transdifferentiation. *Nat Med*. 2004;10:494–501.
- Noiseux N, Gnecchi M, Lopez-Illasaca M, Zhang L, Solomon SD, Deb A, Dzau VJ, Pratt RE. Mesenchymal stem cells overexpressing Akt dramatically repair infarcted myocardium and improve cardiac function despite infrequent cellular fusion or differentiation. *Mol Ther*. 2006;14:840–850.

24. Kajstura J, Rota M, Whang B, Cascapera S, Hosoda T, Bearzi C, Nuszynska D, Kasahara H, Zias E, Bonafe M, Nadal-Ginard B, Torella D, Nascimbene A, Quaini F, Urbanek K, Leri A, Anversa P. Bone marrow cells differentiate in cardiac cell lineages after infarction independently of cell fusion. *Circ Res*. 2005;96:127–137.
25. Gneocchi M, He H, Liang OD, Melo LG, Morello F, Mu H, Noiseux N, Zhang L, Pratt RE, Ingwall JS, Dzau VJ. Paracrine action accounts for marked protection of ischemic heart by Akt-modified mesenchymal stem cells. *Nat Med*. 2005;11:367–368.
26. Gneocchi M, He H, Noiseux N, Liang OD, Zhang L, Morello F, Mu H, Melo LG, Pratt RE, Ingwall JS, Dzau VJ. Evidence supporting paracrine hypothesis for Akt-modified mesenchymal stem cell-mediated cardiac protection and functional improvement. *FASEB J*. 2006;20:661–669.
27. Kinnaird T, Stabile E, Burnett MS, Shou M, Lee CW, Barr S, Fuchs S, Epstein SE. Local delivery of marrow-derived stromal cells augments collateral perfusion through paracrine mechanisms. *Circulation*. 2004;109:1543–1549.
28. Caplan AI, Dennis JE. Mesenchymal stem cells as trophic mediators. *J Cell Biochem*. 2006;98:1076–1084.
29. Kinnaird T, Stabile E, Burnett MS, Lee CW, Barr S, Fuchs S, Epstein SE. Marrow-derived stromal cells express genes encoding a broad spectrum of arteriogenic cytokines and promote in vitro and in vivo arteriogenesis through paracrine mechanisms. *Circ Res*. 2004;94:678–685.
30. Yoon YS, Wecker A, Heyd L, Park JS, Tkebuchava T, Kusano K, Hanley A, Scadova H, Qin G, Cha DH, Johnson KL, Aikawa R, Asahara T, Losordo DW. Clonally expanded novel multipotent stem cells from human bone marrow regenerate myocardium after myocardial infarction. *J Clin Invest*. 2005;115:326–338.
31. Nagaya N, Kangawa K, Itoh T, Iwase T, Murakami S, Miyahara Y, Fujii T, Uematsu M, Ohgushi H, Yamagishi M, Tokudome T, Mori H, Miyatake K, Kitamura S. Transplantation of mesenchymal stem cells improves cardiac function in a rat model of dilated cardiomyopathy. *Circulation*. 2005;112:1128–1135.
32. Takahashi M, Li TS, Suzuki R, Kobayashi T, Ito H, Ikeda Y, Matsuzaki M, Hamano K. Cytokines produced by bone marrow cells can contribute to functional improvement of the infarcted heart by protecting cardiomyocytes from ischemic injury. *Am J Physiol Heart Circ Physiol*. 2006;291:H886–H893.
33. Deb A, Davis BH, Guo J, Ni A, Huang J, Zhang Z, Mu H, Dzau VJ. SFRP2 regulates cardiomyogenic differentiation by inhibiting a positive transcriptional autoregulatory loop of Wnt3a. *Stem Cells*. 2008;26:35–44.
34. Lim SY, Kim YS, Ahn Y, Jeong MH, Hong MH, Joo SY, Nam KI, Cho JG, Kang PM, Park JC. The effects of mesenchymal stem cells transduced with Akt in a porcine myocardial infarction model. *Cardiovasc Res*. 2006;70:530–542.
35. Uemura R, Xu M, Ahmad N, Ashraf M. Bone marrow stem cells prevent left ventricular remodeling of ischemic heart through paracrine signaling. *Circ Res*. 2006;98:1414–1421.
36. Xu M, Uemura R, Dai Y, Wang Y, Pasha Z, Ashraf M. In vitro and in vivo effects of bone marrow stem cells on cardiac structure and function. *J Mol Cell Cardiol*. 2007;42:441–448.
37. Kubal C, Sheth K, Nadal-Ginard B, Galinanes M. Bone marrow cells have a potent anti-ischemic effect against myocardial cell death in humans. *J Thorac Cardiovasc Surg*. 2006;132:1112–1118.
38. Kamihata H, Matsubara H, Nishiue T, Fujiyama S, Tsutsumi Y, Ozono R, Masaki H, Mori Y, Iba O, Tateishi E, Kosaki A, Shintani S, Murohara T, Imaizumi T, Iwasaka T. Implantation of bone marrow mononuclear cells into ischemic myocardium enhances collateral perfusion and regional function via side supply of angioblasts, angiogenic ligands, and cytokines. *Circulation*. 2001;104:1046–1052.
39. Ohnishi S, Yasuda T, Kitamura S, Nagaya N. Effect of hypoxia on gene expression of bone marrow-derived mesenchymal stem cells and mononuclear cells. *Stem Cells*. 2007;25:1166–1177.
40. Jiang S, Haider H, Idris NM, Salim A, Ashraf M. Supportive interaction between cell survival signaling and angiocompetent factors enhances donor cell survival and promotes angiomyogenesis for cardiac repair. *Circ Res*. 2006;99:776–784.
41. Nagaya N, Fujii T, Iwase T, Ohgushi H, Itoh T, Uematsu M, Yamagishi M, Mori H, Kangawa K, Kitamura S. Intravenous administration of mesenchymal stem cells improves cardiac function in rats with acute myocardial infarction through angiogenesis and myogenesis. *Am J Physiol Heart Circ Physiol*. 2004;287:H2670–H2676.
42. Tomita S, Mickle DA, Weisel RD, Jia ZQ, Tumiati LC, Allidina Y, Liu P, Li RK. Improved heart function with myogenesis and angiogenesis after autologous porcine bone marrow stromal cell transplantation. *J Thorac Cardiovasc Surg*. 2002;123:1132–1140.
43. Urbich C, Aicher A, Heeschen C, Dermbach E, Hofmann WK, Zeiher AM, Dimmeler S. Soluble factors released by endothelial progenitor cells promote migration of endothelial cells and cardiac resident progenitor cells. *J Mol Cell Cardiol*. 2005;39:733–742.
44. Aicher A, Brenner W, Zuhayra M, Badorff C, Massoudi S, Assmus B, Eckey T, Henze E, Zeiher AM, Dimmeler S. Assessment of the tissue distribution of transplanted human endothelial progenitor cells by radioactive labeling. *Circulation*. 2003;107:2134–2139.
45. Kawamoto A, Tkebuchava T, Yamaguchi J, Nishimura H, Yoon YS, Milliken C, Uchida S, Masuo O, Iwaguro H, Ma H, Hanley A, Silver M, Kearney M, Losordo DW, Isner JM, Asahara T. Intramyocardial transplantation of autologous endothelial progenitor cells for therapeutic neovascularization of myocardial ischemia. *Circulation*. 2003;107:461–468.
46. Wu Y, Ip JE, Huang J, Zhang L, Matsushita K, Liew CC, Pratt RE, Dzau VJ. Essential role of ICAM-1/CD18 in mediating EPC recruitment, angiogenesis, and repair to the infarcted myocardium. *Circ Res*. 2006;99:315–322.
47. Berry MF, Engler AJ, Woo YJ, Pirolli TJ, Bish LT, Jayasankar V, Morine KJ, Gardner TJ, Discher DE, Sweeney HL. Mesenchymal stem cell injection after myocardial infarction improves myocardial compliance. *Am J Physiol Heart Circ Physiol*. 2006;290:H2196–H2203.
48. Ortiz LA, Gambelli F, McBride C, Gaupp D, Baddoo M, Kaminski N, Phinney DG. Mesenchymal stem cell engraftment in lung is enhanced in response to bleomycin exposure and ameliorates its fibrotic effects. *Proc Natl Acad Sci U S A*. 2003;100:8407–8411.
49. Oyagi S, Hirose M, Kojima M, Okuyama M, Kawase M, Nakamura T, Ohgushi H, Yagi K. Therapeutic effect of transplanting HGF-treated bone marrow mesenchymal cells into CCl4-injured rats. *J Hepatol*. 2006;44:742–748.
50. Ninichuk V, Gross O, Segerer S, Hoffmann R, Radomska E, Buchstaller A, Huss R, Akis N, Schlondorff D, Anders HJ. Multipotent mesenchymal stem cells reduce interstitial fibrosis but do not delay progression of chronic kidney disease in collagen4A3-deficient mice. *Kidney Int*. 2006;70:121–129.
51. Xu X, Xu Z, Xu Y, Cui G. Effects of mesenchymal stem cell transplantation on extracellular matrix after myocardial infarction in rats. *Coron Artery Dis*. 2005;16:245–255.
52. Ohnishi S, Sumiyoshi H, Kitamura S, Nagaya N. Mesenchymal stem cells attenuate cardiac fibroblast proliferation and collagen synthesis through paracrine actions. *FEBS Lett*. 2007;581:3961–3966.
53. Ramalho-Santos M, Yoon S, Matsuzaki Y, Mulligan RC, Melton DA. “Stemness”: transcriptional profiling of embryonic and adult stem cells. *Science*. 2002;298:597–600.
54. Ohnishi S, Yanagawa B, Tanaka K, Miyahara Y, Obata H, Kataoka M, Kodama M, Ishibashi-Ueda H, Kangawa K, Kitamura S, Nagaya N. Transplantation of mesenchymal stem cells attenuates myocardial injury and dysfunction in a rat model of acute myocarditis. *J Mol Cell Cardiol*. 2007;42:88–97.
55. Fuse K, Kodama M, Hanawa H, Okura Y, Ito M, Shiono T, Maruyama S, Hirono S, Kato K, Watanabe K, Aizawa Y. Enhanced expression and production of monocyte chemoattractant protein-1 in myocarditis. *Clin Exp Immunol*. 2001;124:346–352.
56. Pfeffer MA, Braunwald E. Ventricular remodeling after myocardial infarction. Experimental observations and clinical implications. *Circulation*. 1990;81:1161–1172.
57. Freestone NS, Ribaric S, Mason WT. The effect of insulin-like growth factor-1 on adult rat cardiac contractility. *Mol Cell Biochem*. 1996;163–164:223–229.
58. Cittadini A, Stromer H, Katz SE, Clark R, Moses AC, Morgan JP, Douglas PS. Differential cardiac effects of growth hormone and insulin-like growth factor-1 in the rat. A combined in vivo and in vitro evaluation. *Circulation*. 1996;93:800–809.
59. Duerr RL, Huang S, Miraljabbar HR, Clark R, Chien KR, Ross J Jr. Insulin-like growth factor-1 enhances ventricular hypertrophy and function during the onset of experimental cardiac failure. *J Clin Invest*. 1995;95:619–627.
60. Dhein S, Garbade J, Rouabah D, Abraham G, Ungemach FR, Schneider K, Ullmann C, Aupperle H, Gummert JF, Mohr FW. Effects of autologous bone marrow stem cell transplantation on beta-adrenoceptor density and electrical activation pattern in a rabbit model of nonischemic heart failure. *J Cardiothorac Surg*. 2006;1:17.
61. Feygin J, Mansoor A, Eckman P, Swingen C, Zhang J. Functional and bioenergetic modulations in the infarct border zone following autologous



- mesenchymal stem cell transplantation. *Am J Physiol Heart Circ Physiol*. 2007;293:H1772–H1780.
62. Linke A, Muller P, Nurzynska D, Casarsa C, Torella D, Nascimbene A, Castaldo C, Cascapera S, Bohm M, Quaini F, Urbanek K, Leri A, Hintze TH, Kajstura J, Anversa P. Stem cells in the dog heart are self-renewing, clonogenic, and multipotent and regenerate infarcted myocardium, improving cardiac function. *Proc Natl Acad Sci U S A*. 2005;102:8966–8971.
  63. Amado LC, Saliaris AP, Schuleri KH, St John M, Xie JS, Cattaneo S, Durand DJ, Fitton T, Kuang JQ, Stewart G, Lehrke S, Baumgartner WW, Martin BJ, Heldman AW, Hare JM. Cardiac repair with intramyocardial injection of allogeneic mesenchymal stem cells after myocardial infarction. *Proc Natl Acad Sci U S A*. 2005;102:11474–11479.
  64. Norol F, Bonnet N, Peinnequin A, Chretien F, Legrand R, Isnard R, Herodin F, Baillou C, Delache B, Negre D, Klatzmann D, Vernant JP, Lemoine FM. GFP-transduced CD34+ and Lin- CD34- hematopoietic stem cells did not adopt a cardiac phenotype in a nonhuman primate model of myocardial infarct. *Exp Hematol*. 2007;35:653–661.
  65. Nakamura Y, Wang X, Xu C, Asakura A, Yoshiyama M, From AH, Zhang J. Xenotransplantation of long-term-cultured swine bone marrow-derived mesenchymal stem cells. *Stem Cells*. 2007;25:612–620.
  66. Pasha Z, Wang Y, Sheikh R, Zhang D, Zhao T, Ashraf M. Preconditioning enhances cell survival and differentiation of stem cells during transplantation in infarcted myocardium. *Cardiovasc Res*. 2008;77:134–142.
  67. Davis ME, Hsieh PC, Grodzinsky AJ, Lee RT. Custom design of the cardiac microenvironment with biomaterials. *Circ Res*. 2005;97:8–15.
  68. Schachinger V, Erbs S, Elsasser A, Haberbosch W, Hambrecht R, Holschermann H, Yu J, Corti R, Mathey DG, Hamm CW, Suselbeck T, Assmus B, Tonn T, Dimmeler S, Zeiher AM. Intracoronary bone marrow-derived progenitor cells in acute myocardial infarction. *N Engl J Med*. 2006;355:1210–1221.
  69. Rossi DJ, Bryder D, Zahn JM, Ahlenius H, Sonu R, Wagers AJ, Weissman IL. Cell intrinsic alterations underlie hematopoietic stem cell aging. *Proc Natl Acad Sci U S A*. 2005;102:9194–9199.
  70. Dzau VJ, Gnecchi M, Pachori AS, Morello F, Melo LG. Therapeutic potential of endothelial progenitor cells in cardiovascular diseases. *Hypertension*. 2005;46:7–18.
  71. Ryan JM, Barry FP, Murphy JM, Mahon BP. Mesenchymal stem cells avoid allogeneic rejection. *J Inflamm (Lond)*. 2005;2:8.
  72. Barry FP, Murphy JM, English K, Mahon BP. Immunogenicity of adult mesenchymal stem cells: lessons from the fetal allograft. *Stem Cells Dev*. 2005;14:252–265.
  73. Shay JW, Wright WE. Use of telomerase to create bioengineered tissues. *Ann N Y Acad Sci*. 2005;1057:479–491.
  74. Rao MS, Civin CI. Translational research: toward better characterization of human embryonic stem cell lines. *Stem Cells*. 2005;23:1453.
  75. Andrews PW, Benvenisty N, McKay R, Pera MF, Rossant J, Semb H, Stacey GN. The International Stem Cell Initiative: toward benchmarks for human embryonic stem cell research. *Nat Biotechnol*. 2005;23:795–797.
  76. Kong D, Melo LG, Mangi AA, Zhang L, Lopez-Illasaca M, Perrella MA, Liew CC, Pratt RE, Dzau VJ. Enhanced inhibition of neointimal hyperplasia by genetically engineered endothelial progenitor cells. *Circulation*. 2004;109:1769–1775.
  77. Mangi AA, Noiseux N, Kong D, He H, Rezvani M, Ingwall JS, Dzau VJ. Mesenchymal stem cells modified with Akt prevent remodeling and restore performance of infarcted hearts. *Nat Med*. 2003;9:1195–1201.
  78. Li W, Ma N, Ong LL, Nesselmann C, Klopsch C, Ladilov Y, Furlani D, Piechaczek C, Moebius JM, Lutzow K, Lendlein A, Stamm C, Li RK, Steinhoff G. Bcl-2 engineered MSCs inhibited apoptosis and improved heart function. *Stem Cells*. 2007;25:2118–2127.
  79. Tang YL, Tang Y, Zhang YC, Qian K, Shen L, Phillips MI. Improved graft mesenchymal stem cell survival in ischemic heart with a hypoxia-regulated heme oxygenase-1 vector. *J Am Coll Cardiol*. 2005;46:1339–1350.
  80. Duan HF, Wu CT, Wu DL, Lu Y, Liu HJ, Ha XQ, Zhang QW, Wang H, Jia XX, Wang LS. Treatment of myocardial ischemia with bone marrow-derived mesenchymal stem cells overexpressing hepatocyte growth factor. *Mol Ther*. 2003;8:467–474.
  81. Song H, Kwon K, Lim S, Kang SM, Ko YG, Xu Z, Chung JH, Kim BS, Lee H, Joung B, Park S, Choi D, Jang Y, Chung NS, Yoo KJ, Hwang KC. Transfection of mesenchymal stem cells with the FGF-2 gene improves their survival under hypoxic conditions. *Mol Cells*. 2005;19:402–407.
  82. Jo J, Nagaya N, Miyahara Y, Kataoka M, Harada-Shiba M, Kangawa K, Tabata Y. Transplantation of genetically engineered mesenchymal stem cells improves cardiac function in rats with myocardial infarction: benefit of a novel nonviral vector, cationized dextran. *Tissue Eng*. 2007;13:313–322.
  83. Matsumoto R, Omura T, Yoshiyama M, Hayashi T, Inamoto S, Koh KR, Ohta K, Izumi Y, Nakamura Y, Akioka K, Kitaura Y, Takeuchi K, Yoshikawa J. Vascular endothelial growth factor-expressing mesenchymal stem cell transplantation for the treatment of acute myocardial infarction. *Arterioscler Thromb Vasc Biol*. 2005;25:1168–1173.
  84. Khalil ME, Basher AW, Brown EJ Jr, Alhaddad IA. A remarkable medical story: benefits of angiotensin-converting enzyme inhibitors in cardiac patients. *J Am Coll Cardiol*. 2001;37:1757–1764.
  85. Hughes GC, Post MJ, Simons M, Annex BH. Translational physiology: porcine models of human coronary artery disease: implications for pre-clinical trials of therapeutic angiogenesis. *J Appl Physiol*. 2003;94:1689–1701.
  86. Post MJ, Laham R, Sellke FW, Simons M. Therapeutic angiogenesis in cardiology using protein formulations. *Cardiovasc Res*. 2001;49:522–531.
  87. Malik DK, Baboota S, Ahuja A, Hasan S, Ali J. Recent advances in protein and peptide drug delivery systems. *Curr Drug Deliv*. 2007;4:141–151.
  88. Zhang G, Nakamura Y, Wang X, Hu Q, Suggs LJ, Zhang J. Controlled release of stromal cell-derived factor-1 alpha in situ increases c-kit+ cell homing to the infarcted heart. *Tissue Eng*. 2007;13:2063–2071.
  89. Segers VF, Tokunou T, Higgins LJ, MacGillivray C, Gannon J, Lee RT. Local delivery of protease-resistant stromal cell derived factor-1 for stem cell recruitment after myocardial infarction. *Circulation*. 2007;116:1683–1692.
  90. Webster KA. Programmed death as a therapeutic target to reduce myocardial infarction. *Trends Pharmacol Sci*. 2007;28:492–499.
  91. Potapova IA, Gaudette GR, Brink PR, Robinson RB, Rosen MR, Cohen IS, Doronin SV. Mesenchymal stem cells support migration, extracellular matrix invasion, proliferation, and survival of endothelial cells in vitro. *Stem Cells*. 2007;25:1761–1768.
  92. House SL, Melhorn SJ, Newman G, Doetschman T, Schultz Jel J. The protein kinase C pathway mediates cardioprotection induced by cardiac-specific overexpression of fibroblast growth factor-2. *Am J Physiol Heart Circ Physiol*. 2007;293:H354–H365.
  93. Ferdinandy P, Schulz R, Baxter GF. Interaction of cardiovascular risk factors with myocardial ischemia/reperfusion injury, preconditioning, and postconditioning. *Pharmacol Rev*. 2007;59:418–458.
  94. Budas GR, Churchill EN, Mochly-Rosen D. Cardioprotective mechanisms of PKC isozyme-selective activators and inhibitors in the treatment of ischemia-reperfusion injury. *Pharmacol Res*. 2007;55:523–536.
  95. Hanlon PR, Fu P, Wright GL, Steenbergen C, Arcasoy MO, Murphy E. Mechanisms of erythropoietin-mediated cardioprotection during ischemia-reperfusion injury: role of protein kinase C and phosphatidylinositol 3-kinase signaling. *FASEB J*. 2005;19:1323–1325.